



Your Corporate Real Estate Departmentsm

11,452 Square Foot Available for Lease

137 Commercial Street, Plainview, New York

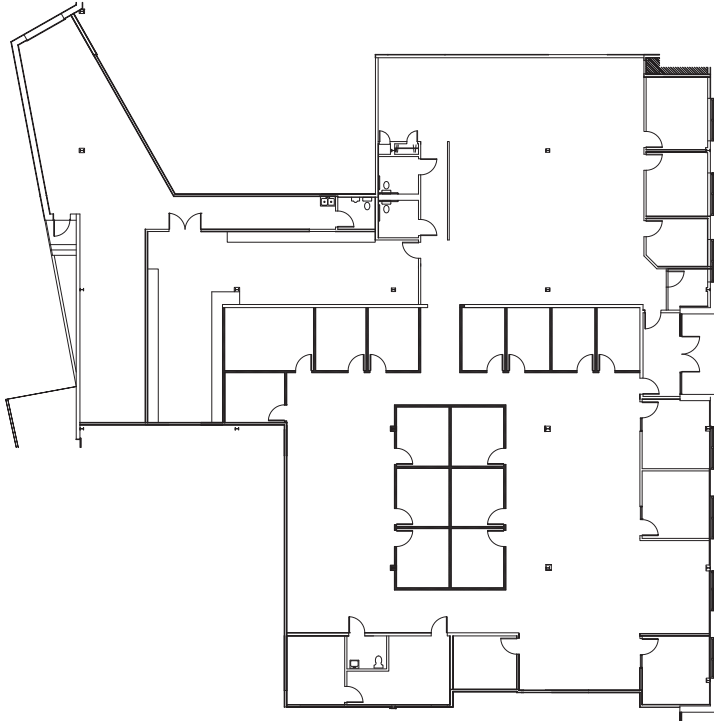


- 11,452 square feet available
- 90% office and finished space
- Ceiling height is 17'
- Separate outside entrance, parking at door
- Fully sprinklered, sewers, gas-fired HVAC
- Over 155 parking spaces available for entire building
- On the service road of the Long Island Expressway, Exit 46

137 Commercial Street is an 40,660 square foot renovated R&D building located immediately off the Long Island Expressway in Plainview, New York. The 2.3 acre site has extensive parking.



Your Corporate Real Estate DepartmentSM



137 Commercial Street, Plainview, NY

Description:

11,452 square feet available in a 40,660 square foot "flex" building situated on 2.3 acres available for lease.

Location:

On South Service Road of the Long Island Expressway, at Exit 46.

Parking:

Over 155 parking spaces for the entire building, parking ratio 4:1.

Building:

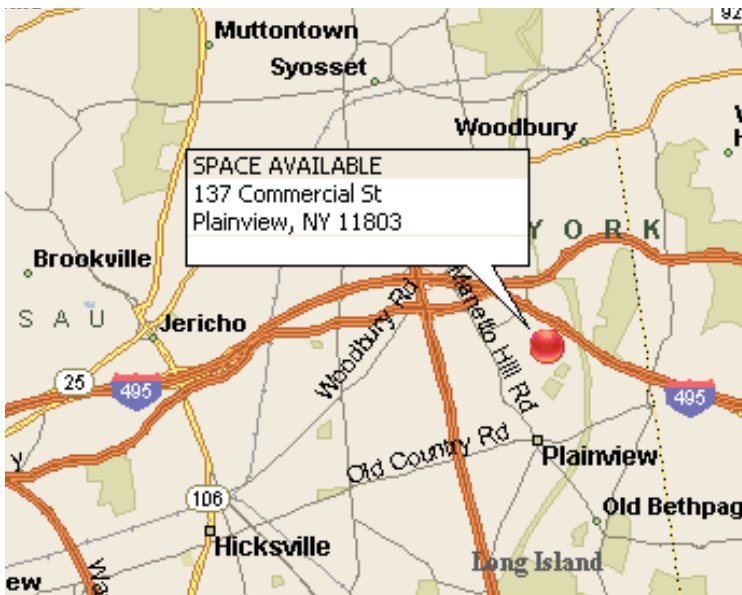
Office & finished area:	Approximately 90%
Divisible:	No
Ceiling Height:	17' clearance
Heat:	Gas
Sprinkler:	Yes
Sewers:	Yes
Loading:	1 loading dock
Power:	400 amps

Occupancy:

Arranged

Rental:

Call for custom quotation based upon finish.



For further information:

HUNT CORPORATE SERVICES, INC.
17 Dupont Street, Suite 4, Plainview, NY 11803
Tel: (516) 937-1000 • (800) 360-2250
Fax: (516) 931-1850 • email@huntcorp.com
www.huntcorp.com