



Your Corporate Real Estate Departmentsm

RXR PLAZA

***Sublease from Swiss International Air Lines Ltd.
RXR Plaza, Uniondale, New York***

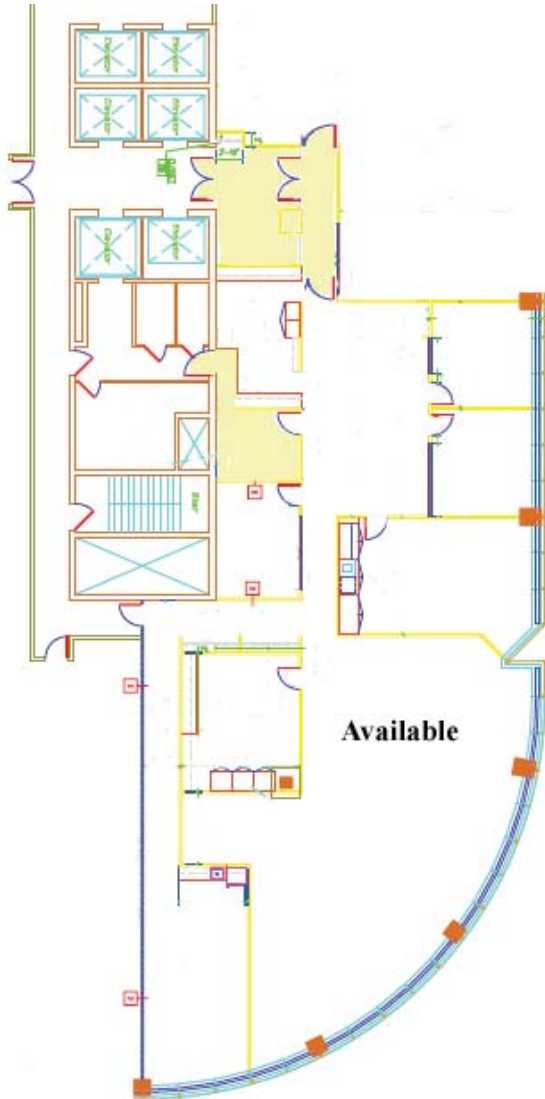


RXR Plaza is a 1,100,000 square foot Class A office complex consisting of two 15-story glass towers. Adjacent to the Meadowbrook Parkway with access to all major highways. Moments from the Marriott Hotel, Nassau Coliseum and Roosevelt Field.

- 6,986 square feet of office space available for sublease
- Conference and kitchen areas
- Furniture and telephone system available
- 24-hour/7-day access with fully attended lobby security
- Computerized building energy management system
- Dramatic winter garden public space with soaring 60-foot atrium



Your Corporate Real Estate DepartmentSM



RXR Plaza, Uniondale, NY

Description:

6,986 square feet on the seventh floor.

Location:

Adjacent to the Meadowbrook Parkway, and a short distance to all major highways. Neighbors the Nassau Coliseum, the Marriott Hotel and Roosevelt Field. Only 20 minutes to JFK and LaGuardia Airports.

Parking:

4 spaces per 1,000 square feet, with reserved parking available.

Building:

Office Area:	6,986 square feet
24/7 Access/Security:	Yes
Post Office/Fed Ex:	Yes
Dry cleaner:	Yes
Day care center:	Yes
Fitness center:	Yes
Passenger elevators:	8
Floor:	Seventh

Term:

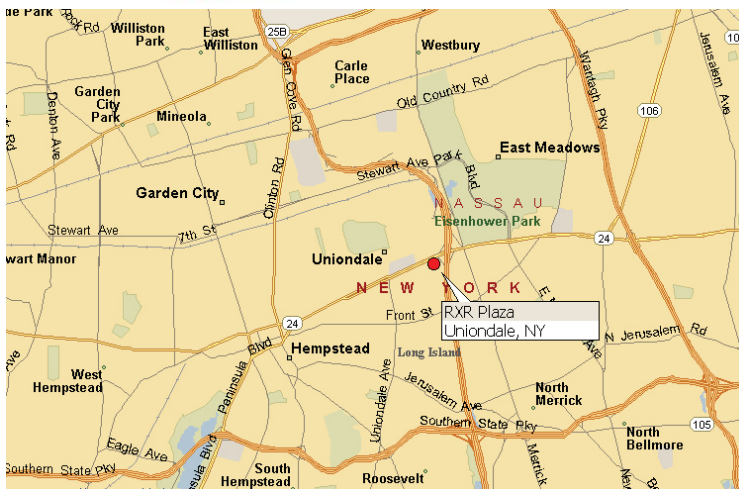
May 31, 2013

Occupancy:

Immediate

Rental:

Upon request



For further information:

HUNT CORPORATE SERVICES, INC.
17 Dupont St., Suite 4, Plainview, NY 11803-1614
Tel: (516) 937-1000 • (800) 360-2250
Fax: (516) 931-1850 • email@huntcorp.com
www.huntcorp.com